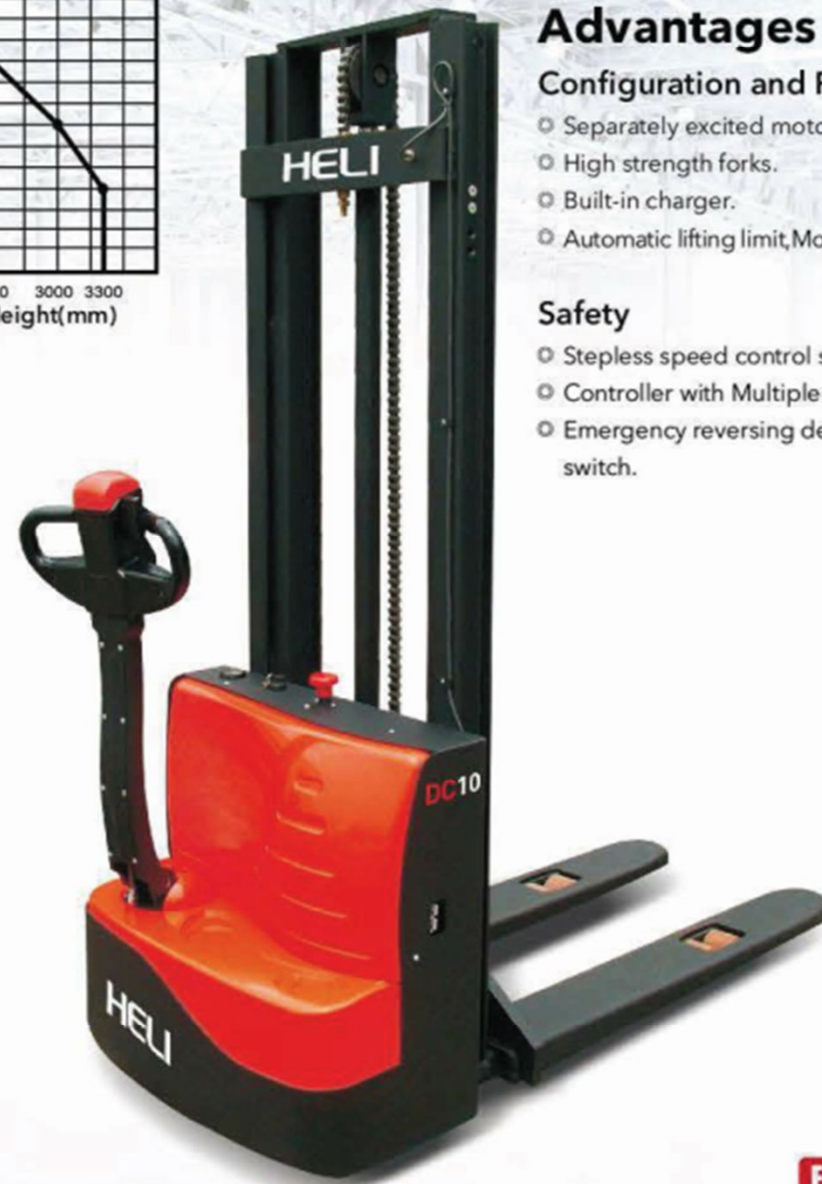
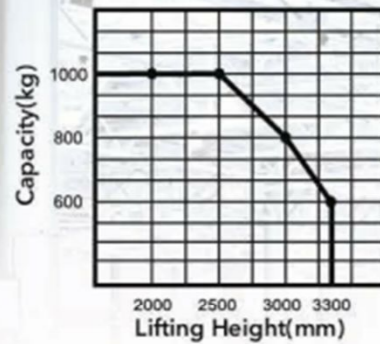


CDD10-070

1.0 Ton Electric Fork Over Stacker
Lifting Height: 2000-3300mm

Load Curve



Advantages

Configuration and Performance

- Separately excited motor, Strong climbing ability.
- High strength forks.
- Built-in charger.
- Automatic lifting limit, Motor and battery life extension.

Safety

- Stepless speed control system, safe and quiet.
- Controller with Multiple automatic protection
- Emergency reversing device/Emergency brake switch.

Built-in charger

Free-maintained battery

Integrated fork, much stronger

24 YEARS TOP1 FORKLIFT MANUFACTURER AND SALER
IN CHINA FOR CONSECUTIVE 24 YEARS

| Type | Lift height (mm) | Mast type | Outside width between legs (mm) | Inside width between legs (mm) |
|-----------|---------------------|------------------|---------------------------------|--------------------------------|
| CDD10-070 | 2000/2500/3000/3300 | Standard 2-STAGE | 550/600/650/685 | 180/230/280/315 |

HELI CDD10-070

| Feature | | |
|--|------|------------------------------|
| Model | | CDD10 |
| Configuration No. | | 070 |
| Type | | Fork over |
| Mast type | | Standard 2-Stage |
| Load capacity | kg | 1000 |
| Load center | mm | 600 |
| Wheel base | mm | 1150 |
| Operating type | | Walkie |
| Wheels | | |
| Wheels type | | PU |
| Wheel quantity Driving wheel/Balance wheel/Bearing wheel | | 1/1/4 |
| Dimension | | |
| Standard lift height | mm | 2000/2500/3000/3300 |
| Max.extend height | mm | 2385/2885/3385/3685 |
| Mast lowered height | mm | 1550/1800/2050/2200 |
| Lowered fork height | mm | 90 |
| Fork size(length/width/thickness) | mm | 1150(1220)/185/55 |
| Overall length | mm | 1733 |
| Overall width | mm | 790 |
| Outside width between forks | mm | 550/600/650/685 |
| Inside width between forks | mm | 180/230/280/315 |
| Min.Turning radius | mm | 1350 |
| Min.Aisle width for pallets 800×1200 | mm | 1914 |
| Min.Aisle width for pallets 1000×1200 | mm | 1955 |
| MIn.ground clearance | mm | 30 |
| Performance | | |
| Travel speed,laden/unladed | km/h | 3/3.5 |
| Lift speed,laden/unladed | mm/s | 130/230 |
| Lowering speed,laden/unladed | mm/s | 130/230 |
| Gradeability,laden/unladed | % | 5/7 |
| Electrical configuration | | |
| Drive motor/Lift motor/Steering motor | kW | DC0.63/DC2.0 |
| Battery voltage | V | 24 |
| Battery capacity | Ah | 70 |
| Brake | | Electromagnetic/Regenerative |
| Controller | | HELI(Options CURTIS) |
| Weight | | |
| Battery weight | kg | 48 |
| Service weight with battery | kg | 580 |

* Details of specifications and equipment are based on information available at time of printing and may change without notice.



[Click Here](#) to visit our website

Email us : sales@ncfork.com.au

Call us : [0437 804 082](tel:0437804082)