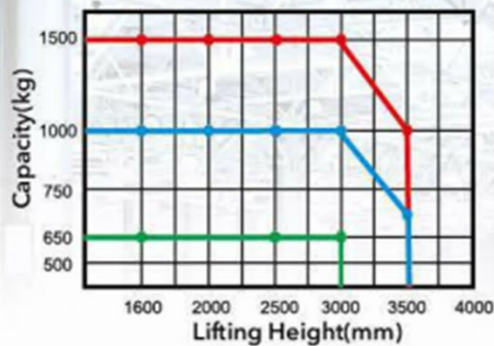


# CBS06/10/15

## 0.65-1.5 Ton Semi-electric Fork Over Stacker

Lifting Height: 1600-3500mm

### Load Curve



- CBS06-Z160
- CBS10-Z160
- CBS15-Z160

### Advantages

- Integrated hydraulic pump station.
- External charger.
- 100Ah Maintenance free storage battery.
- Easy operating foot brake.

### Options

- Activities cover forks, adjustable.
- The forging forks, adjustable.



### Semi-electric fork-over typed stacker

Type	Lift height (mm)	Mast type
CBS06-Z160	1600/2500/3000	Standard 2-STAGE
CBS10-Z160	1600/2000/2500/3000/3500	Standard 2-STAGE
CBS15-Z160	1600/2000/2500/3000/3500	Standard 2-STAGE

\* Lift height ≤ 1600mm-Single mast

Feature				
Model		CBS06	CBS10	CBS15
Configuration No.		Z160	Z160	Z160
Type		Fork over	Fork over	Fork over
Mast type		Standard 2-Stage	Standard 2-Stage	Standard 2-Stage
Loading capacity	kg	650	1000	1500
Standard lift height	mm	1600/2500/3000	1600/2000/2500/3000/3500	1600/2000/2500/3000/3500
Operating type		Walkie	Walkie	Walkie
Load center	mm	500	500	500
Wheels				
Front wheel diameter	mm	80	80	80
Rear wheel diameter	mm	180	180	180
Dimension				
Min.fork lowered height	mm	90	90	90
Fork size(length/width/thickness)	mm	1150(1000)/160/60	1150(1000)/160/60	1150(1000)/160/60
Outside width between legs	mm	-	-	-
Inside width between legs	mm	-	-	-
Outside width between forks	mm	560/650/685	560/650/685	560/650/685
Inside width between forks	mm	240/330/365	240/330/365	240/330/365
Overall length	mm	1580	1580	1580
Overall width	mm	730	730	730
Max.extend height	mm	2080/3027/3527	2080/2527/3027/3527/4027	2080/2527/3027/3527/4027
Mast lowered height	mm	2080/1800/2050	2080/1550/1800/2050/2300	2080/1550/1800/2050/2300
Min.Turning radius	mm	1240	1240	1240
Min.Aisle width for pallets 800×1220	mm	1890	1890	1890
Min.Aisle width for pallets 1000×1220	mm	1932	1932	1932
Min.ground clearance	mm	30	30	30
Performance				
Lift speed,laden/unladen	mm/s	75/105	70/105	65/105
Lowering speed,laden/unladen	mm/s	135/70	145/80	155/90
Electrical configuration				
Motor	kW	1.6	1.6	1.6
Battery voltage	V	12	12	12
Battery capacity	Ah	100	100	100
Weight				
Battery weight	kg	28	28	28
Service weight with battery	kg	340	360	390

\* Details of specifications and equipment are based on information available at time of printing and may change without notice.



[Click Here](#) to visit our website

Email us : [sales@ncfork.com.au](mailto:sales@ncfork.com.au)

Call us : [0437 804 082](tel:0437804082)